

THE GRADUATE SCHOOL
UNIVERSITY of WASHINGTON

UW

Empowering Our Students, Affirming Our Community

Office of Graduate Student Equity & Excellence (GSEE) — formerly known as GO-MAP

NOTE: Image from an event in 2019, pre-COVID-19.

After reflecting on over 50 years of service at UW, GSEE continues our vision of providing leadership and advocacy to achieve equitable representation, access, and success for graduate students of color at UW. While GSEE is based on the Seattle campus, Bothell and Tacoma students are welcome to participate in GSEE programming. As part of the UW Graduate School, GSEE's mission is to foster, expand, and strengthen equitable and sustainable environments and practices that promote success in educating an ethnically diverse graduate student body.

Empowering Our
Students, Affirming
Our Community

GSEE

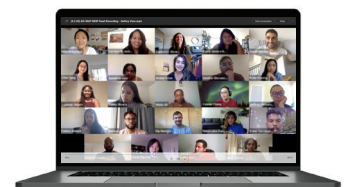
Recruitment & Outreach

The GSEE Graduate Diversity Fellowship Program provides approximately \$2.2 million in annual fellowships and awards to support the recruitment and success of graduate students of color.

GSEE hosts Prospective Student Days (March 31 & April 1, 2022), which feature events that encourage admitted Black, Indigenous, and People of Color (BIPOC) graduate applicants to choose the UW for graduate study. This event combines GO-MAP-sponsored activities with opportunities to participate in events offered by individual departments. Through in-person and/or virtual orientation sessions, prospective students from all three UW campuses network with current graduate students of color and staff and learn about funding, housing, resources and the Pacific Northwest.

GSEE supports departmental efforts to identify and encourage outstanding candidates to consider the UW for graduate study. Our outreach efforts include:

- **The Outreaching Grads (OGs) Program**, a corps of graduate students of color who connect with potential underrepresented graduate students.
- **Connecting** with UW's prospective and current graduate students of color to increase diversity and graduate student success.
- **Utilizing** the National Name Exchange (NNE), a consortium of more than 55 major U.S. universities that inform underrepresented undergraduates about graduate opportunities in their areas of interest.
- **Highlighting and coordinating** attendance for virtual and/or in-person forums, conferences and seminars across the nation to identify promising graduate students of color.



For details on GSEE services and programming, visit grad.uw.edu/gsee

Graduate Student Success

GSEE offers year-round virtual and/or in-person programming as part of its commitment to enhancing scholarship, professional development and community building. A few highlights:

- **GSEE's New Student Welcome** (August 4, 2021) is our annual virtual meet-and-greet for incoming UW graduate students of color and features a student panel and various breakout rooms for new students to begin building community prior to the start of the academic year.
- **Getting Connected** (October 12, 2021) is our annual orientation and welcome event, providing opportunities for incoming graduate students of color to engage with new and returning graduate students from across campus.
- **GSEE Power Hours** feature ways for graduate students of color to thrive and address professional development issues such as navigating academia and overcoming impostor syndrome.
- **Real Talk Tuesdays** are opportunities for students to gather in safe virtual and/or in-person spaces and share experiences featuring current social issues, pop culture, affinity groups or themed topics and more. Please read our weekly GSEE newsletter for dates and times.
- **Dissertation Writing Groups** are offered, when possible, to support GSEE Fellows and students through the final stages of their doctoral programs.
- **The Mary Ann and John Mangels Endowed Lecture Series** features minoritized scholars and public figures whose careers impact diversity.
- At monthly **Staying Connected** socials, our grad students are welcomed by our GSEE Graduate Student Advisory Board within a virtual and/or in-person happy hour environment.
- Drop-in **Decompression Spaces** are offered by GSEE staff to provide support and community for our grad students throughout the academic year.
- **Spring Soiree/Acknowledgment** is an opportunity to recognize UW's outstanding graduate students of color and highlight their achievements.

POC OUTDOORS

This is a student-founded and student-led GSEE community group for graduate students of color who are interested in and/or passionate about the outdoors and/or environmental justice and inclusion (follow [@uw poc outdoors](#) on Instagram for updates).



NOTE: Images are from events in 2019, pre-COVID-19.

Partnerships & Advocacy

GO-MAP works with departmental graduate program advisors and coordinators to ensure graduate students are aware of the numerous opportunities available on the UW campuses.

GO-MAP collaborates with various UW organizations and units to bring quality programming and support to graduate students of color in all aspects of study and life. Some of our collaborators include:

- **Office of Equity and Justice in Graduate Programs** (*Equity Focused Office Hours*)
- **Center for Communication, Difference and Equity** (*Real Talk Tuesdays*)
- **Core Programs**
- **Counseling Center**
- **Samuel E. Kelly Ethnic Cultural Center**
- **GSEE Faculty and Staff Advisory Board**
- **GSEE Graduate Student Advisory Board**

CONTACT US

Office of Graduate Student Equity & Excellence (GSEE)

FORMERLY KNOWN AS GO-MAP

G-1 Communications Building | Box 353770
Seattle, Washington, 98195-3770

206.543.9016 | uwgsee@uw.edu

REVISED: 9/2021