

Outreaching Grads (OGs)

Office of Graduate Student Equity & Excellence (GSEE) — formerly known as GO-MAP

NOTE: Image from an event in 2019, pre-COVID-19.

A unit of the UW Graduate School, the Office of Graduate Student Equity & Excellence (GSEE) is committed to enhancing equity and social progression to promote the recruitment and success of graduate students of color at the UW. While GSEE is based on the Seattle campus, Bothell and Tacoma graduate students are welcome to participate in GSEE programming.

*Empowering Our
Students, Affirming
Our Community*

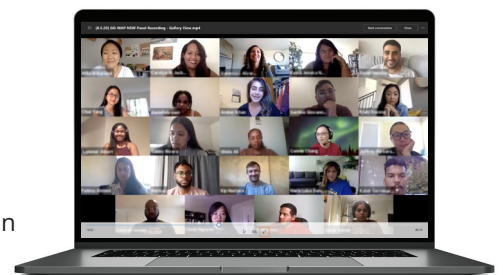
GSEE

The OGs Program

The Outreaching Grads (OGs) Program is a corps of Black, Indigenous, and People of Color (BIPOC) graduate students who support GSEE, academic departments, and student organizations to enhance outreach and recruitment efforts for prospective and incoming graduate students of color. The goal of the OGs Program is to introduce underrepresented graduate students to numerous opportunities and resources that help build community and increase racial and ethnic diversity within the graduate student pipeline.

Who We Are

OGs come from an array of ethnically diverse backgrounds and assist academic departments in their diversity and inclusion recruitment efforts. Graduate students of color committed to increasing the underrepresented graduate student pipeline on all three campuses can become OGs. Students who take initiative, have a passion for social progress, and come from a variety of disciplines are encouraged to be part of the OGs Program.



GET INVOLVED

If you are interested in making a commitment to increasing diversity within the graduate student pipeline, whether by becoming an OG or by requesting an OG for your department, please contact GSEE at uwgsee@uw.edu.



NOTE: Images from events in 2019, pre-COVID-19.



Becoming an OG

Becoming an OG is a way to give back to our communities, create meaningful friendships across campus, and ensure graduate opportunities remain open to all. OGs will also benefit from:

- **Creating** new friendships with prospective and current graduate students of color
- **Gaining** leadership strengths, public speaking expertise, and other professional skill sets
- **Expanding** social and professional networks
- **Building** professional and community involvement skills that will enhance career goals

What We Do

OGs are trained to lead and support prospective, incoming, and current graduate students of color in navigating the numerous aspects and phases of graduate school. They provide a personal lens as well as meaningful guidance on living in the Pacific Northwest, communicating in virtual spaces, and finding academic and relevant resources. To aid in assessing graduate student needs and to cultivate an inclusive campus community, OGs can assist in the following ways:

- **Connect and share** opportunities and resources with prospective graduate students of color (virtually and/or in-person)
- **Participate** in professional development seminars, leadership training, and social justice workshops
- **Share** graduate opportunities with UW registered student organizations to help build the graduate student pipeline
- **Engage** in graduate student panels, public speaking and recruitment events, and networking engagements

BECOME AN OG TODAY!

**Office of Graduate Student
Equity & Excellence (GSEE)**

FORMERLY KNOWN AS GO-MAP

G-1 Communications Building | Box 353770
Seattle, Washington, 98195-3770

206.543.9016 | uwgsee@uw.edu

REVISED: 9/2021