

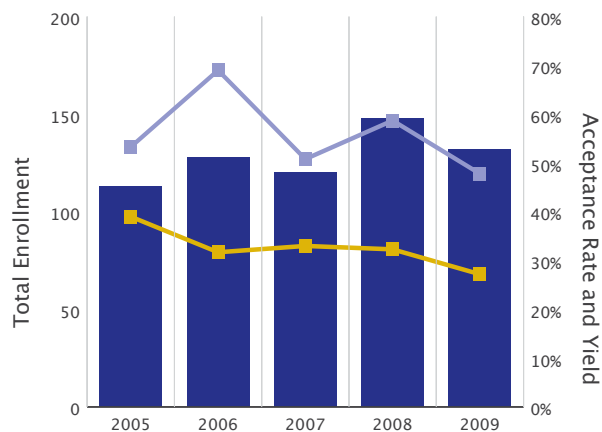
Appendix



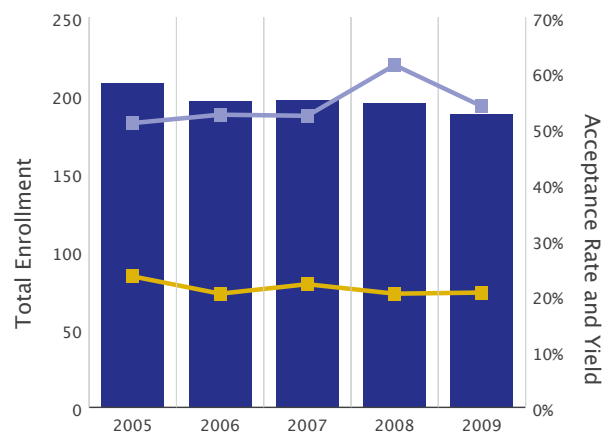
Arts & Sciences – Arts

Doctoral							
Year	# of Applicants	Denied	Accepted	New Enrollees	Total Enrollment	Acceptance Rate	Yield Rate
2005	154	94	60	32	113	39.0%	53.3%
2006	183	125	58	40	128	31.7%	69.0%
2007	179	120	59	30	120	33.0%	50.8%
2008	195	132	63	37	148	32.3%	58.7%
2009	169	123	46	22	132	27.2%	47.8%
2008 Snapshot	213	-	-	-	-	-	-
2009 Snapshot	178	-	-	-	-	-	-
2010 Snapshot	168	-	-	-	-	-	-
Master's							
Year	# of Applicants	Denied	Accepted	New Enrollees	Total Enrollment	Acceptance Rate	Yield Rate
2005	660	505	155	79	208	23.5%	51.0%
2006	784	624	160	84	196	20.4%	52.5%
2007	701	546	155	81	197	22.1%	52.3%
2008	685	545	140	86	195	20.4%	61.4%
2009	611	485	126	68	188	20.6%	54.0%
2008 Snapshot	708	-	-	-	-	-	-
2009 Snapshot	627	-	-	-	-	-	-
2010 Snapshot	648	-	-	-	-	-	-

Doctoral



Master's



■ Total Enrollment

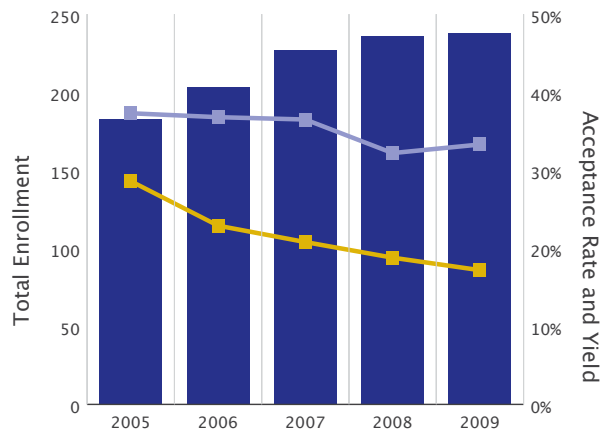
■ Acceptance Rate

■ Yield Rate

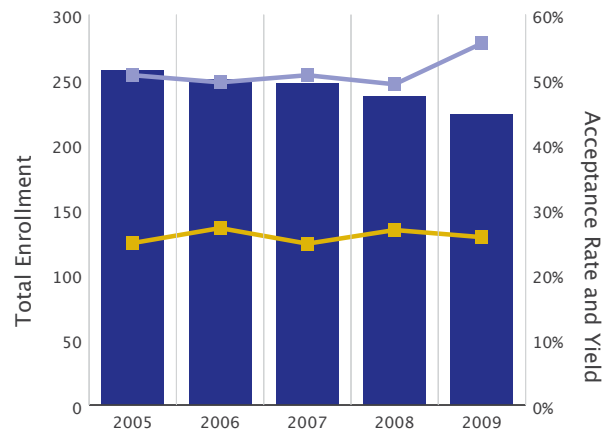
Arts & Sciences – Humanities

Doctoral							
Year	# of Applicants	Denied	Accepted	New Enrollees	Total Enrollment	Acceptance Rate	Yield Rate
2005	290	207	83	31	183	28.6%	37.3%
2006	380	293	87	32	203	22.9%	36.8%
2007	500	396	104	38	227	20.8%	36.5%
2008	478	388	90	29	236	18.8%	32.2%
2009	522	432	90	30	238	17.2%	33.3%
2008 Snapshot	484	-	-	-	-	-	-
2009 Snapshot	525	-	-	-	-	-	-
2010 Snapshot	595	-	-	-	-	-	-
Master's							
Year	# of Applicants	Denied	Accepted	New Enrollees	Total Enrollment	Acceptance Rate	Yield Rate
2005	846	635	211	107	257	24.9%	50.7%
2006	830	604	226	112	250	27.2%	49.6%
2007	809	608	201	102	247	24.8%	50.7%
2008	747	546	201	99	237	26.9%	49.3%
2009	697	517	180	100	223	25.8%	55.6%
2008 Snapshot	746	-	-	-	-	-	-
2009 Snapshot	691	-	-	-	-	-	-
2010 Snapshot	718	-	-	-	-	-	-

Doctoral



Master's



■ Total Enrollment

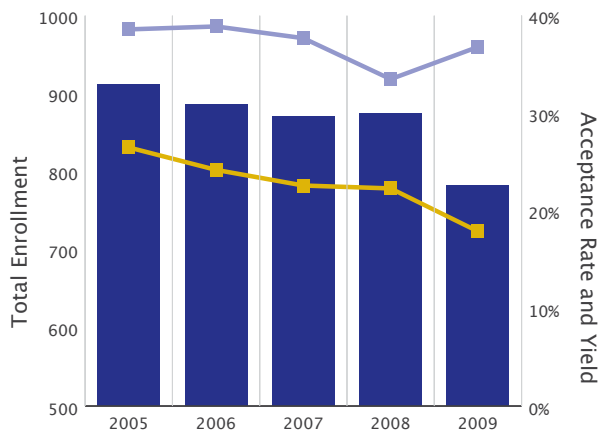
■ Acceptance Rate

■ Yield Rate

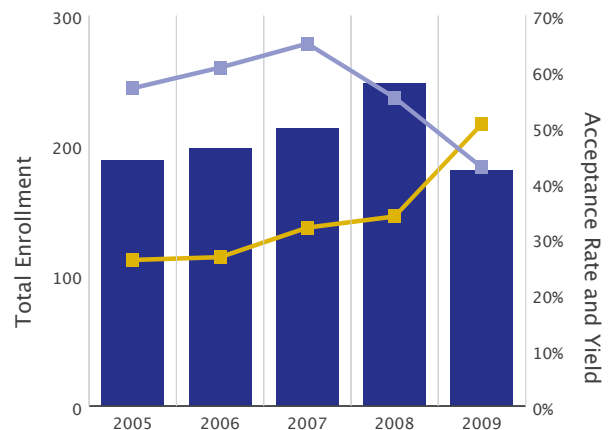
Arts & Sciences – Sciences

Doctoral							
Year	# of Applicants	Denied	Accepted	New Enrollees	Total Enrollment	Acceptance Rate	Yield Rate
2005	1857	1365	492	190	912	26.5%	38.6%
2006	1874	1421	453	176	886	24.2%	38.9%
2007	2055	1591	464	175	871	22.6%	37.7%
2008	2296	1783	513	172	875	22.3%	33.5%
2009	2274	1866	408	150	783	17.9%	36.8%
2008 Snapshot	2299	-	-	-	-	-	-
2009 Snapshot	2452	-	-	-	-	-	-
2010 Snapshot	2625	-	-	-	-	-	-
Master's							
Year	# of Applicants	Denied	Accepted	New Enrollees	Total Enrollment	Acceptance Rate	Yield Rate
2005	489	361	128	73	189	26.2%	57.0%
2006	562	412	150	91	198	26.7%	60.7%
2007	490	333	157	102	213	32.0%	65.0%
2008	559	369	190	105	248	34.0%	55.3%
2009	413	204	209	89	181	50.6%	42.8%
2008 Snapshot	532	-	-	-	-	-	-
2009 Snapshot	465	-	-	-	-	-	-
2010 Snapshot	519	-	-	-	-	-	-

Doctoral



Master's



■ Total Enrollment

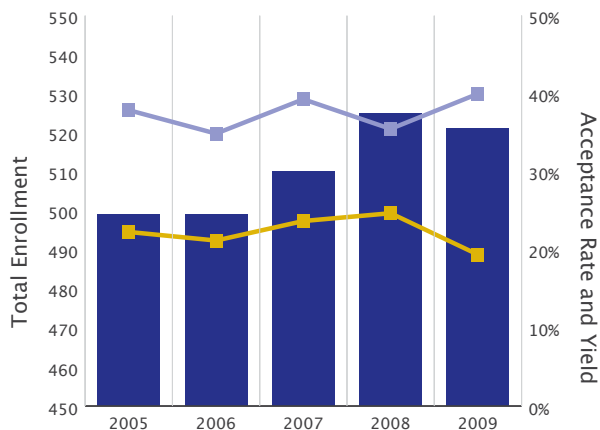
■ Acceptance Rate

■ Yield Rate

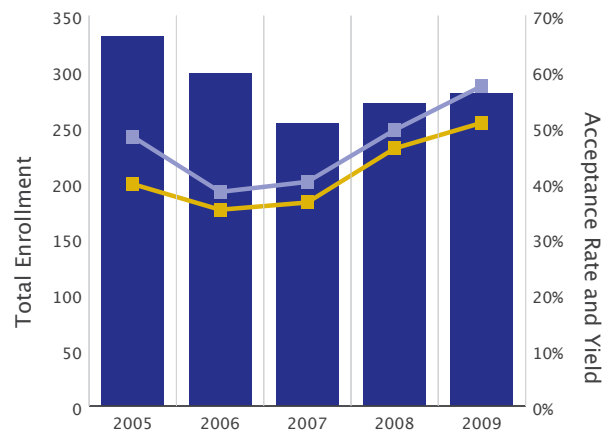
Arts & Sciences – Social Sciences

Doctoral							
Year	# of Applicants	Denied	Accepted	New Enrollees	Total Enrollment	Acceptance Rate	Yield Rate
2005	1090	847	243	92	499	22.3%	37.9%
2006	1173	924	249	87	499	21.2%	34.9%
2007	1063	811	252	99	510	23.7%	39.3%
2008	1104	831	273	97	525	24.7%	35.5%
2009	1057	852	205	82	522	19.4%	40.0%
2008 Snapshot	1119	-	-	-	-	-	-
2009 Snapshot	1069	-	-	-	-	-	-
2010 Snapshot	1116	-	-	-	-	-	-
Master's							
Year	# of Applicants	Denied	Accepted	New Enrollees	Total Enrollment	Acceptance Rate	Yield Rate
2005	723	435	288	139	231	39.8%	48.3%
2006	711	461	250	96	298	35.2%	38.4%
2007	715	454	261	105	253	36.5%	40.2%
2008	591	318	273	135	271	46.2%	49.5%
2009	531	261	270	155	280	50.8%	57.4%
2008 Snapshot	626	-	-	-	-	-	-
2009 Snapshot	540	-	-	-	-	-	-
2010 Snapshot	638	-	-	-	-	-	-

Doctoral



Master's



■ Total Enrollment

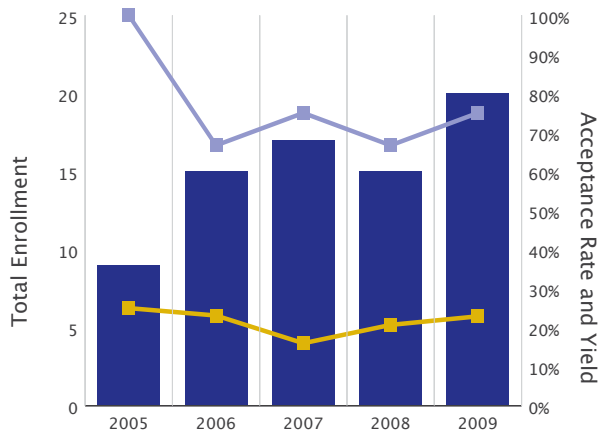
■ Acceptance Rate

■ Yield Rate

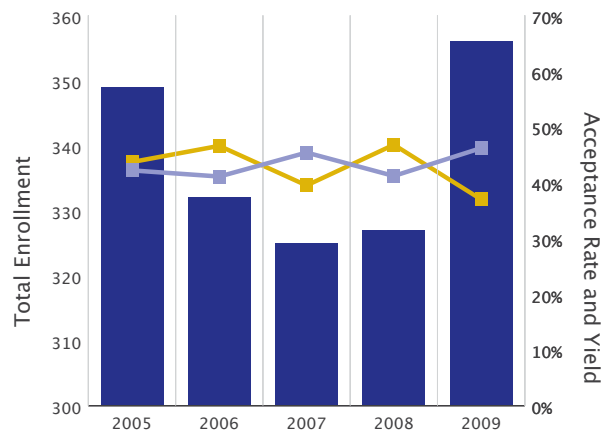
Built Environments

Doctoral							
Year	# of Applicants	Denied	Accepted	New Enrollees	Total Enrollment	Acceptance Rate	Yield Rate
2005	12	9	3	3	9	25.0%	100.0%
2006	26	20	6	4	15	23.1%	66.7%
2007	25	21	4	3	17	16.0%	75.0%
2008	29	23	6	4	15	20.7%	66.7%
2009	35	27	8	6	20	22.9%	75.0%
2008 Snapshot	29	-	-	-	-	-	-
2009 Snapshot	35	-	-	-	-	-	-
2010 Snapshot	45	-	-	-	-	-	-
Master's							
Year	# of Applicants	Denied	Accepted	New Enrollees	Total Enrollment	Acceptance Rate	Yield Rate
2005	781	440	341	144	349	43.7%	42.2%
2006	804	429	375	154	332	46.6%	41.1%
2007	903	546	357	162	325	39.5%	45.4%
2008	809	430	379	156	327	46.8%	41.2%
2009	953	600	353	163	356	37.0%	46.2%
2008 Snapshot	871	-	-	-	-	-	-
2009 Snapshot	944	-	-	-	-	-	-
2010 Snapshot	1153	-	-	-	-	-	-

Doctoral



Master's



■ Total Enrollment

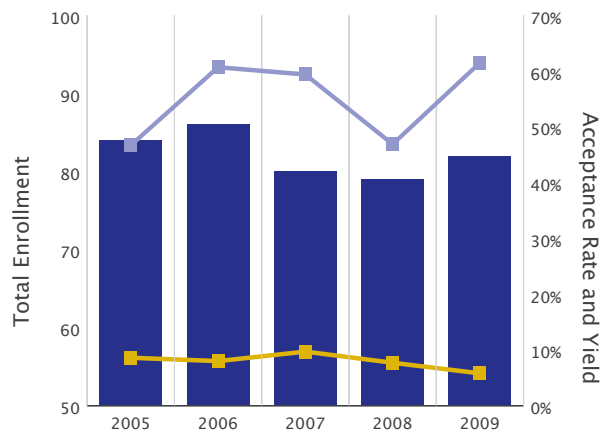
■ Acceptance Rate

■ Yield Rate

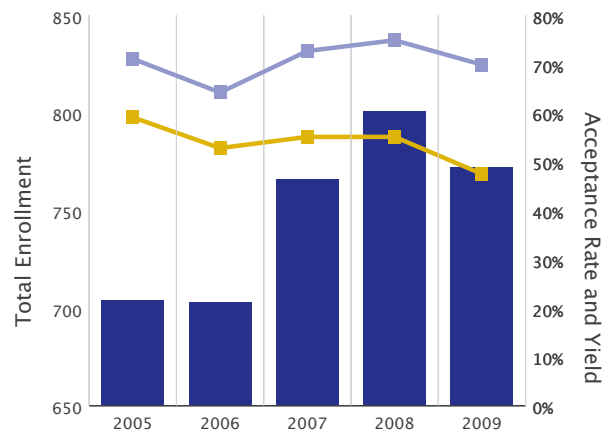
Business

Doctoral							
Year	# of Applicants	Denied	Accepted	New Enrollees	Total Enrollment	Acceptance Rate	Yield Rate
2005	350	320	30	14	84	8.6%	46.7%
2006	350	322	28	17	86	8.0%	60.7%
2007	331	299	32	19	80	9.7%	59.4%
2008	413	381	32	15	79	7.7%	46.9%
2009	450	424	26	16	82	5.8%	61.5%
2008 Snapshot	428	-	-	-	-	-	-
2009 Snapshot	467	-	-	-	-	-	-
2010 Snapshot	523	-	-	-	-	-	-
Master's							
Year	# of Applicants	Denied	Accepted	New Enrollees	Total Enrollment	Acceptance Rate	Yield Rate
2005	1095	448	647	460	704	59.1%	71.1%
2006	1180	557	623	400	703	52.8%	64.2%
2007	1196	537	659	479	766	55.1%	72.7%
2008	1085	487	598	448	801	55.1%	74.9%
2009	1216	638	578	404	772	47.5%	69.9%
2008 Snapshot	903	-	-	-	-	-	-
2009 Snapshot	646	-	-	-	-	-	-
2010 Snapshot	1122	-	-	-	-	-	-

Doctoral



Master's



■ Total Enrollment

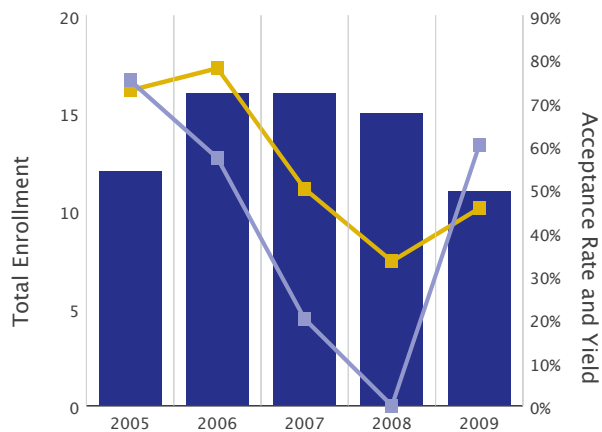
■ Acceptance Rate

■ Yield Rate

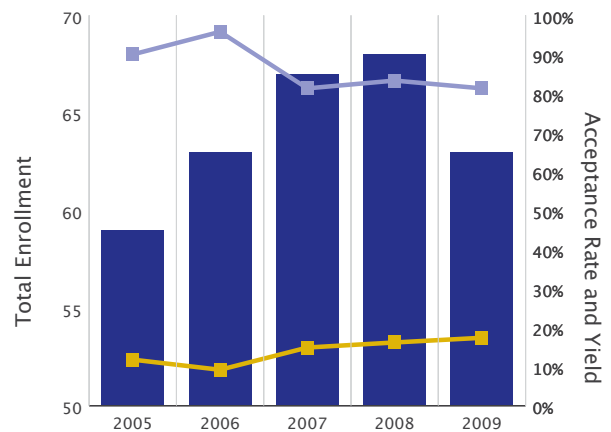
Dentistry

Doctoral							
Year	# of Applicants	Denied	Accepted	New Enrollees	Total Enrollment	Acceptance Rate	Yield Rate
2005	11	3	8	6	12	72.7%	75.0%
2006	9	2	7	4	16	77.8%	57.1%
2007	10	5	5	1	16	50.0%	20.0%
2008	9	6	3	0	15	33.3%	0.0%
2009	11	6	5	3	11	45.5%	60.0%
2008 Snapshot	10	-	-	-	-	-	-
2009 Snapshot	14	-	-	-	-	-	-
2010 Sanpshot	7	-	-	-	-	-	-
Master's							
Year	# of Applicants	Denied	Accepted	New Enrollees	Total Enrollment	Acceptance Rate	Yield Rate
2005	254	224	30	27	59	11.8%	90.0%
2006	261	237	24	23	63	9.2%	95.8%
2007	215	183	32	26	67	14.9%	81.3%
2008	185	155	30	25	68	16.2%	83.3%
2009	184	152	32	26	63	17.4%	81.3%
2008 Snapshot	187	-	-	-	-	-	-
2009 Snapshot	185	-	-	-	-	-	-
2010 Sanpshot	151	-	-	-	-	-	-

Doctoral



Master's



■ Total Enrollment

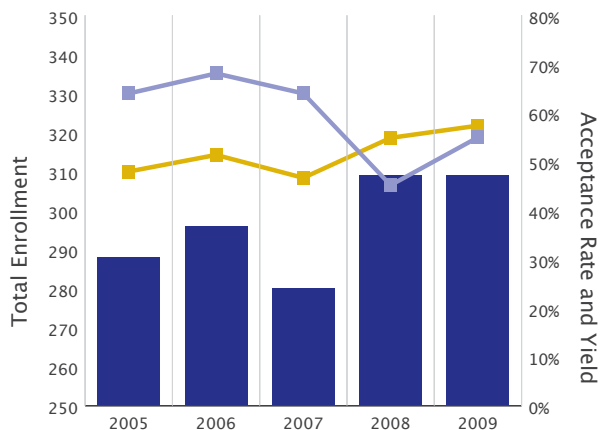
■ Acceptance Rate

■ Yield Rate

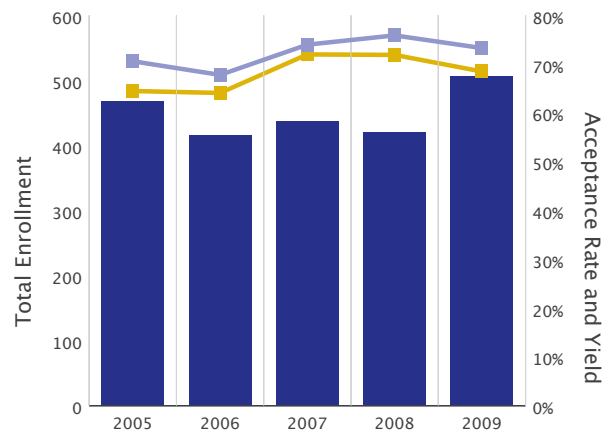
Education

Doctoral							
Year	# of Applicants	Denied	Accepted	New Enrollees	Total Enrollment	Acceptance Rate	Yield Rate
2005	179	93	86	55	288	48.0%	64.0%
2006	220	107	113	77	296	51.4%	68.1%
2007	184	98	86	55	280	46.7%	64.0%
2008	246	111	135	61	309	54.9%	45.2%
2009	244	104	140	77	309	57.4%	55.0%
2008 Snapshot	237	-	-	-	-	-	-
2009 Snapshot	240	-	-	-	-	-	-
2010 Snapshot	228	-	-	-	-	-	-
Master's							
Year	# of Applicants	Denied	Accepted	New Enrollees	Total Enrollment	Acceptance Rate	Yield Rate
2005	501	178	323	228	468	64.5%	70.6%
2006	557	200	357	242	416	64.1%	67.8%
2007	486	136	350	259	437	72.0%	74.0%
2008	577	162	415	315	421	71.9%	75.9%
2009	672	212	460	337	506	68.5%	73.3%
2008 Snapshot	550	-	-	-	-	-	-
2009 Snapshot	588	-	-	-	-	-	-
2010 Snapshot	605	-	-	-	-	-	-

Doctoral



Master's



■ Total Enrollment

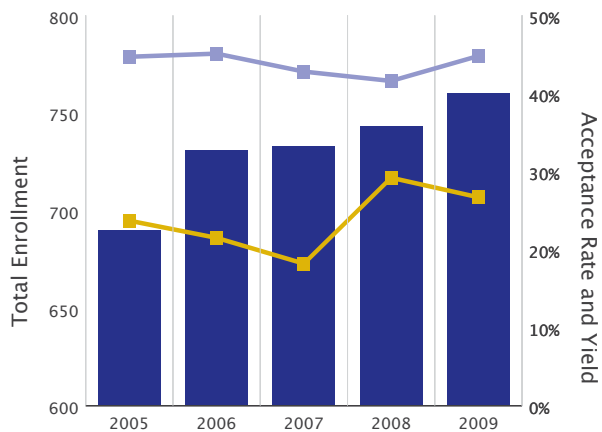
■ Acceptance Rate

■ Yield Rate

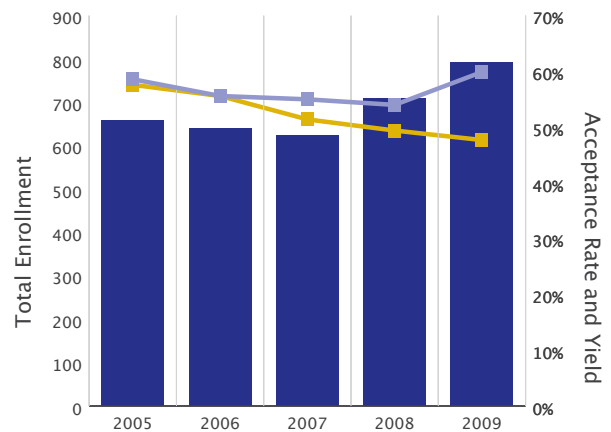
Engineering

Doctoral							
Year	# of Applicants	Denied	Accepted	New Enrollees	Total Enrollment	Acceptance Rate	Yield Rate
2005	1549	1182	367	164	690	23.7%	44.7%
2006	1723	1353	370	167	731	21.5%	45.1%
2007	1936	1583	353	151	733	18.2%	42.8%
2008	1268	898	370	154	743	29.2%	41.6%
2009	1407	1032	375	168	760	26.7%	44.8%
2008 Snapshot	2125	-	-	-	-	-	-
2009 Snapshot	2460	-	-	-	-	-	-
2010 Snapshot	2734	-	-	-	-	-	-
Master's							
Year	# of Applicants	Denied	Accepted	New Enrollees	Total Enrollment	Acceptance Rate	Yield Rate
2005	936	397	539	316	659	57.6%	58.6%
2006	1012	449	563	313	641	55.6%	55.6%
2007	1104	537	567	312	623	51.4%	55.0%
2008	1256	636	620	335	710	49.4%	54.0%
2009	1520	795	725	434	791	47.7%	59.9%
2008 Snapshot	1154	-	-	-	-	-	-
2009 Snapshot	1359	-	-	-	-	-	-
2010 Snapshot	1557	-	-	-	-	-	-

Doctoral



Master's



■ Total Enrollment

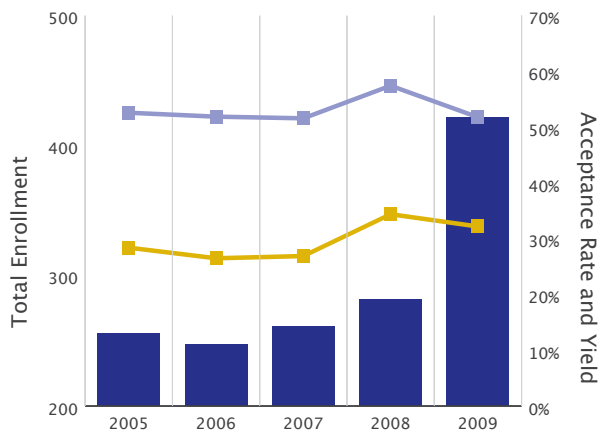
■ Acceptance Rate

■ Yield Rate

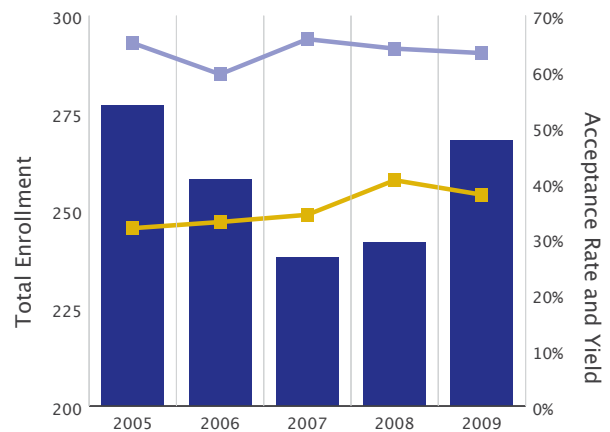
Environment

Doctoral							
Year	# of Applicants	Denied	Accepted	New Enrollees	Total Enrollment	Acceptance Rate	Yield Rate
2005	268	192	76	40	256	28.4%	52.6%
2006	291	214	77	40	247	26.5%	51.9%
2007	346	253	93	48	261	26.9%	51.6%
2008	294	193	101	58	282	34.4%	57.4%
2009	342	232	110	57	422	32.2%	51.8%
2008 Snapshot	294	-	-	-	-	-	-
2009 Snapshot	340	-	-	-	-	-	-
2010 Snapshot	366	-	-	-	-	-	-
Master's							
Year	# of Applicants	Denied	Accepted	New Enrollees	Total Enrollment	Acceptance Rate	Yield Rate
2005	477	325	152	99	277	31.9%	65.1%
2006	449	301	148	88	258	33.0%	59.5%
2007	434	285	149	98	238	34.3%	65.8%
2008	358	213	145	93	242	40.5%	64.1%
2009	388	241	147	93	268	37.9%	63.3%
2008 Snapshot	373	-	-	-	-	-	-
2009 Snapshot	392	-	-	-	-	-	-
2010 Snapshot	472	-	-	-	-	-	-

Doctoral



Master's



■ Total Enrollment

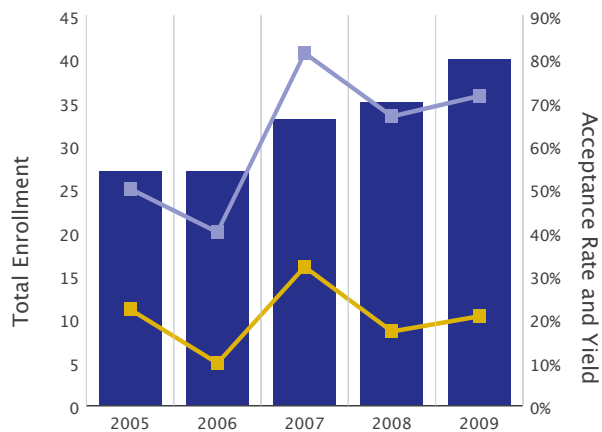
■ Acceptance Rate

■ Yield Rate

Information School

Doctoral							
Year	# of Applicants	Denied	Accepted	New Enrollees	Total Enrollment	Acceptance Rate	Yield Rate
2005	54	42	12	6	27	22.2%	50.0%
2006	51	46	5	2	27	9.8%	40.0%
2007	50	34	16	13	33	32.0%	81.3%
2008	70	58	12	8	35	17.1%	66.7%
2009	68	54	14	10	40	20.6%	71.4%
2008 Snapshot	74	-	-	-	-	-	-
2009 Snapshot	68	-	-	-	-	-	-
2010 Snapshot	73	-	-	-	-	-	-
Master's							
Year	# of Applicants	Denied	Accepted	New Enrollees	Total Enrollment	Acceptance Rate	Yield Rate
2005	472	183	289	199	421	61.2%	68.9%
2006	512	211	301	199	463	58.8%	66.1%
2007	496	195	301	198	468	60.7%	65.8%
2008	497	173	324	214	490	65.2%	66.0%
2009	604	242	362	209	487	59.9%	57.7%
2008 Snapshot	510	-	-	-	-	-	-
2009 Snapshot	639	-	-	-	-	-	-
2010 Snapshot	738	-	-	-	-	-	-

Doctoral

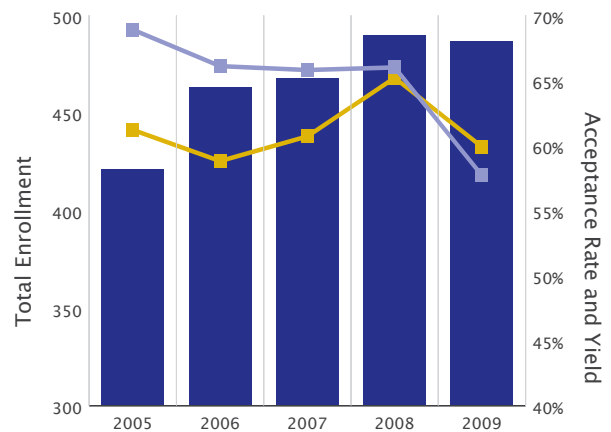


■ Total Enrollment

■ Acceptance Rate

■ Yield Rate

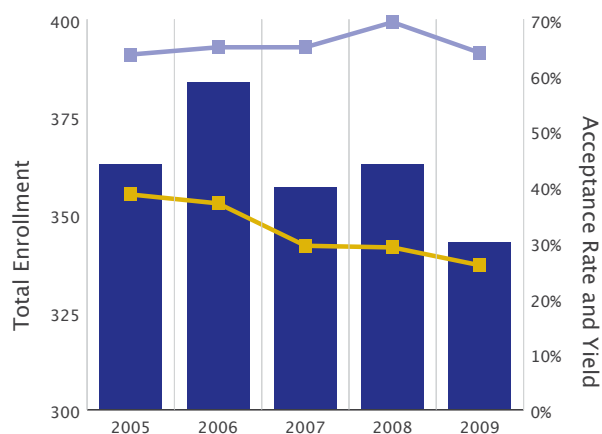
Master's



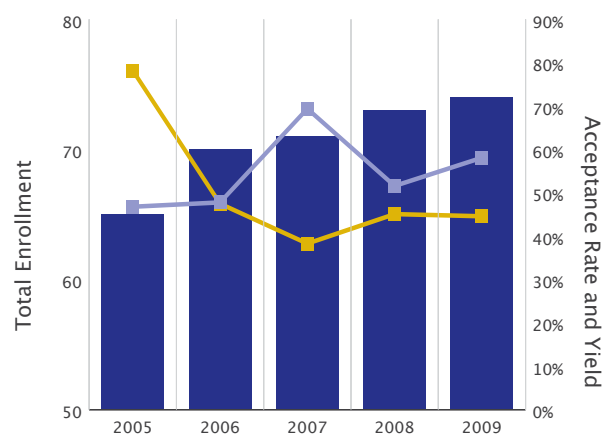
Interdisciplinary Graduate School Programs

Doctoral							
Year	# of Applicants	Denied	Accepted	New Enrollees	Total Enrollment	Acceptance Rate	Yield Rate
2005	708	435	273	174	363	38.6%	63.7%
2006	765	482	283	184	384	37.0%	65.0%
2007	807	570	237	154	357	29.4%	65.0%
2008	777	551	226	157	363	29.1%	69.5%
2009	771	571	200	128	343	25.9%	64.0%
2008 Snapshot	764	-	-	-	-	-	-
2009 Snapshot	755	-	-	-	-	-	-
2010 Snapshot	731	-	-	-	-	-	-
Master's							
Year	# of Applicants	Denied	Accepted	New Enrollees	Total Enrollment	Acceptance Rate	Yield Rate
2005	101	22	79	37	65	78.2%	46.8%
2006	141	74	67	32	70	47.5%	47.8%
2007	128	79	49	34	71	38.3%	69.4%
2008	142	78	64	33	73	45.1%	51.6%
2009	139	77	62	36	74	44.6%	58.1%
2008 Snapshot	148	-	-	-	-	-	-
2009 Snapshot	143	-	-	-	-	-	-
2010 Snapshot	204	-	-	-	-	-	-

Doctoral



Master's



■ Total Enrollment

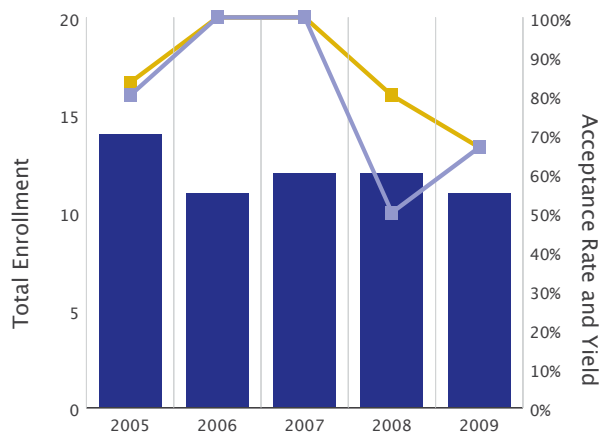
■ Acceptance Rate

■ Yield Rate

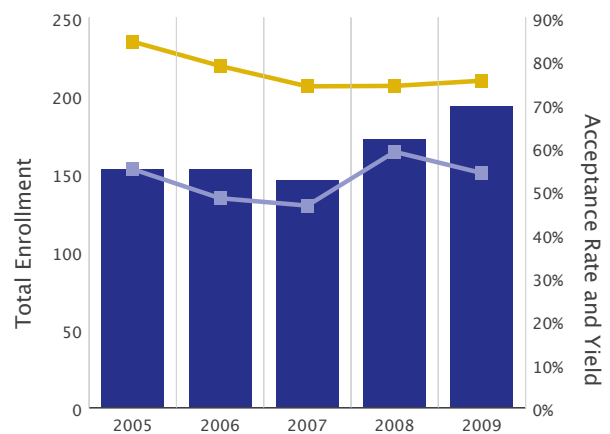
Law

Doctoral							
Year	# of Applicants	Denied	Accepted	New Enrollees	Total Enrollment	Acceptance Rate	Yield Rate
2005	6	1	5	4	14	83.3%	80.0%
2006	1	0	1	1	11	100.0%	100.0%
2007	1	0	1	1	12	100.0%	100.0%
2008	5	1	4	2	12	80.0%	50.0%
2009	9	3	6	4	11	66.7%	66.7%
2008 Snapshot	9	-	-	-	-	-	-
2009 Snapshot	16	-	-	-	-	-	-
2010 Snapshot	14	-	-	-	-	-	-
Master's							
Year	# of Applicants	Denied	Accepted	New Enrollees	Total Enrollment	Acceptance Rate	Yield Rate
2005	263	41	222	122	153	84.4%	55.0%
2006	302	64	238	115	153	78.8%	48.3%
2007	313	81	232	108	146	74.1%	46.6%
2008	322	83	239	141	172	74.2%	59.0%
2009	341	84	257	139	193	75.4%	54.1%
2008 Snapshot	350	-	-	-	-	-	-
2009 Snapshot	380	-	-	-	-	-	-
2010 Snapshot	393	-	-	-	-	-	-

Doctoral



Master's



■ Total Enrollment

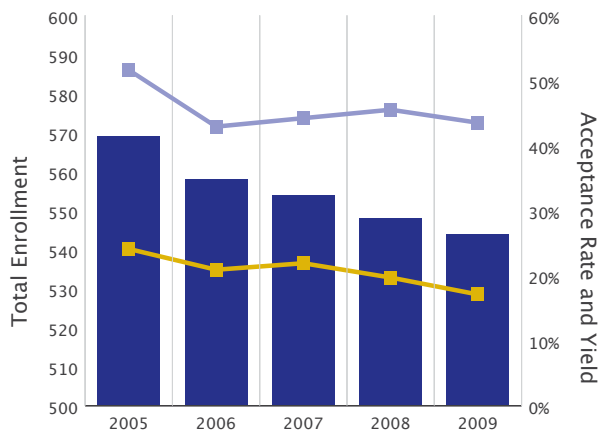
■ Acceptance Rate

■ Yield Rate

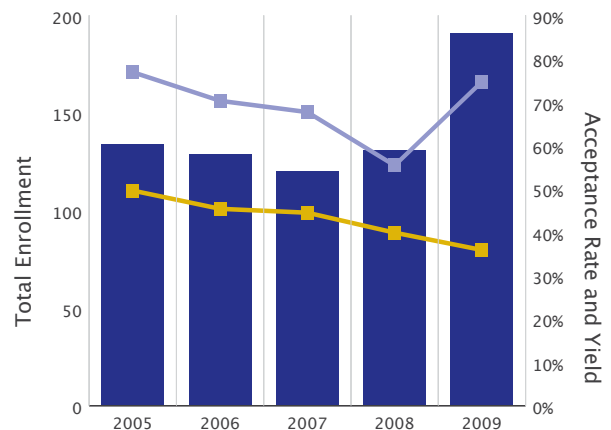
Medicine

Doctoral							
Year	# of Applicants	Denied	Accepted	New Enrollees	Total Enrollment	Acceptance Rate	Yield Rate
2005	1036	786	250	129	569	24.1%	51.6%
2006	1114	881	233	100	558	20.9%	42.9%
2007	1105	863	242	107	554	21.9%	44.2%
2008	1194	959	235	107	548	19.7%	45.5%
2009	1302	1079	223	97	544	17.1%	43.5%
2008 Snapshot	1213	-	-	-	-	-	-
2009 Snapshot	1324	-	-	-	-	-	-
2010 Snapshot	1537	-	-	-	-	-	-
Master's							
Year	# of Applicants	Denied	Accepted	New Enrollees	Total Enrollment	Acceptance Rate	Yield Rate
2005	131	66	65	50	134	49.6%	76.9%
2006	141	77	64	45	129	45.4%	70.3%
2007	146	81	65	44	120	44.5%	67.7%
2008	303	182	121	67	131	39.9%	55.4%
2009	440	282	158	118	191	35.9%	74.7%
2008 Snapshot	291	-	-	-	-	-	-
2009 Snapshot	452	-	-	-	-	-	-
2010 Snapshot	507	-	-	-	-	-	-

Doctoral



Master's



■ Total Enrollment

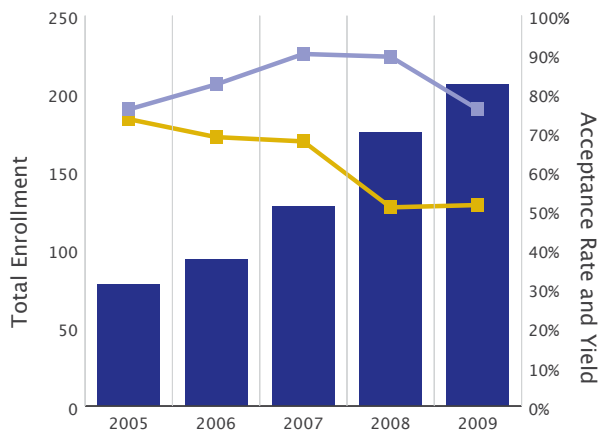
■ Acceptance Rate

■ Yield Rate

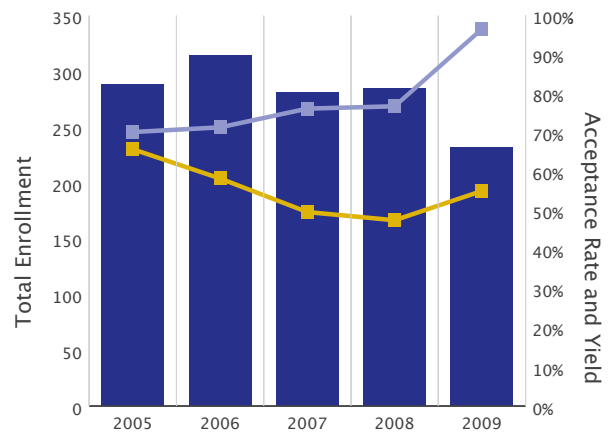
Nursing

Doctoral							
Year	# of Applicants	Denied	Accepted	New Enrollees	Total Enrollment	Acceptance Rate	Yield Rate
2005	34	9	25	19	78	73.5%	76.0%
2006	74	23	51	42	94	68.9%	82.4%
2007	90	29	61	55	128	67.8%	90.2%
2008	169	83	86	77	175	50.9%	89.5%
2009	235	114	121	92	206	51.5%	76.0%
2008 Snapshot	164	-	-	-	-	-	-
2009 Snapshot	278	-	-	-	-	-	-
2010 Snapshot	225	-	-	-	-	-	-
Master's							
Year	# of Applicants	Denied	Accepted	New Enrollees	Total Enrollment	Acceptance Rate	Yield Rate
2005	301	103	198	139	288	65.8%	70.2%
2006	336	140	196	140	314	58.3%	71.4%
2007	288	145	143	109	281	49.7%	76.2%
2008	389	204	185	142	285	47.6%	76.8%
2009	107	48	59	57	232	55.1%	96.6%
2008 Snapshot	386	-	-	-	-	-	-
2009 Snapshot	109	-	-	-	-	-	-
2010 Snapshot	239	-	-	-	-	-	-

Doctoral



Master's



■ Total Enrollment

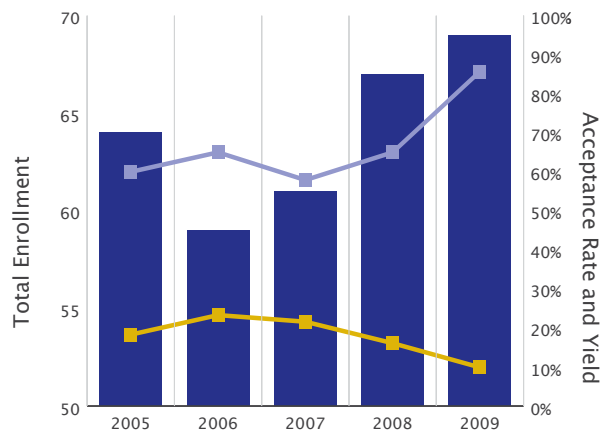
■ Acceptance Rate

■ Yield Rate

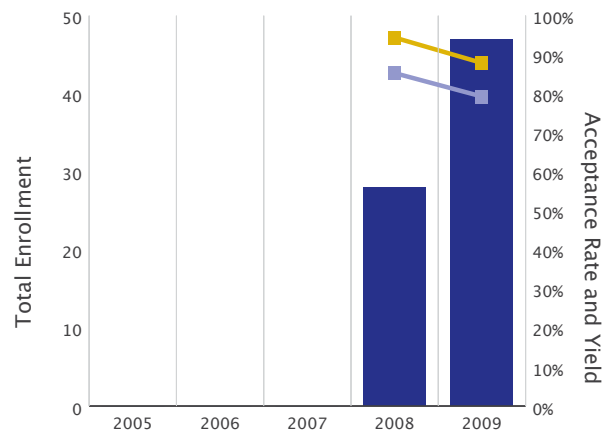
Pharmacy

Doctoral							
Year	# of Applicants	Denied	Accepted	New Enrollees	Total Enrollment	Acceptance Rate	Yield Rate
2005	82	67	15	9	64	18.3%	60.0%
2006	86	66	20	13	59	23.3%	65.0%
2007	88	69	19	11	61	21.6%	57.9%
2008	124	104	20	13	67	16.1%	65.0%
2009	142	128	14	12	69	9.9%	85.7%
2008 Snapshot	123	-	-	-	-	-	-
2009 Snapshot	144	-	-	-	-	-	-
2010 Snapshot	163	-	-	-	-	-	-
Master's							
Year	# of Applicants	Denied	Accepted	New Enrollees	Total Enrollment	Acceptance Rate	Yield Rate
2005	-	-	-	-	-	-	-
2006	-	-	-	-	-	-	-
2007	-	-	-	-	-	-	-
2008	36	2	34	29	28	94.4%	85.3%
2009	33	4	29	23	47	87.9%	79.3%
2008 Snapshot	34	-	-	-	-	-	-
2009 Snapshot	32	-	-	-	-	-	-
2010 Snapshot	34	-	-	-	-	-	-

Doctoral



Master's



■ Total Enrollment

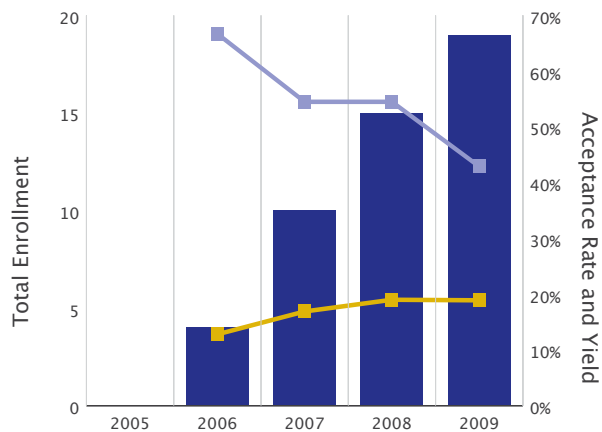
■ Acceptance Rate

■ Yield Rate

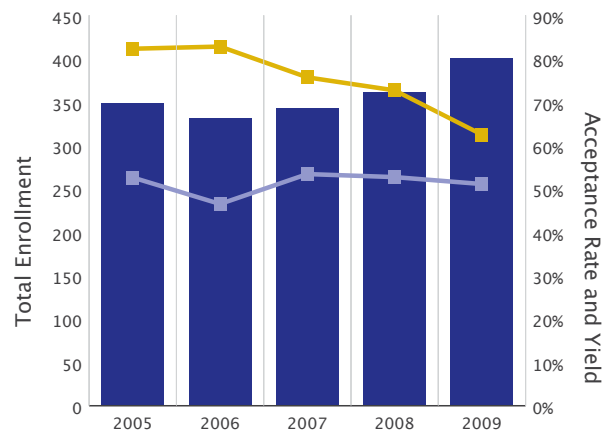
Public Affairs

Doctoral							
Year	# of Applicants	Denied	Accepted	New Enrollees	Total Enrollment	Acceptance Rate	Yield Rate
2005	-	-	-	-	-	-	-
2006	47	41	6	4	4	12.8%	66.7%
2007	65	54	11	6	10	16.9%	54.5%
2008	58	47	11	6	15	19.0%	54.5%
2009	37	30	7	3	19	18.9%	42.9%
2008 Snapshot	60	-	-	-	-	-	-
2009 Snapshot	37	-	-	-	-	-	-
2010 Snapshot	55	-	-	-	-	-	-
Master's							
Year	# of Applicants	Denied	Accepted	New Enrollees	Total Enrollment	Acceptance Rate	Yield Rate
2005	379	67	312	164	349	82.3%	52.6%
2006	377	65	312	145	331	82.8%	46.5%
2007	423	103	320	171	343	75.7%	53.4%
2008	439	120	319	168	362	72.7%	52.7%
2009	608	228	380	194	401	62.5%	51.1%
2008 Snapshot	487	-	-	-	-	-	-
2009 Snapshot	616	-	-	-	-	-	-
2010 Snapshot	669	-	-	-	-	-	-

Doctoral



Master's



■ Total Enrollment

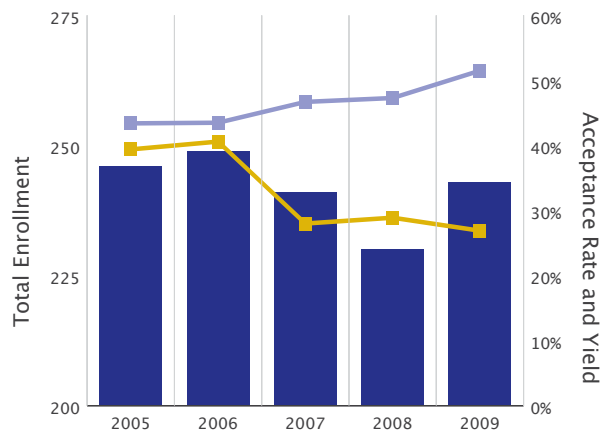
■ Acceptance Rate

■ Yield Rate

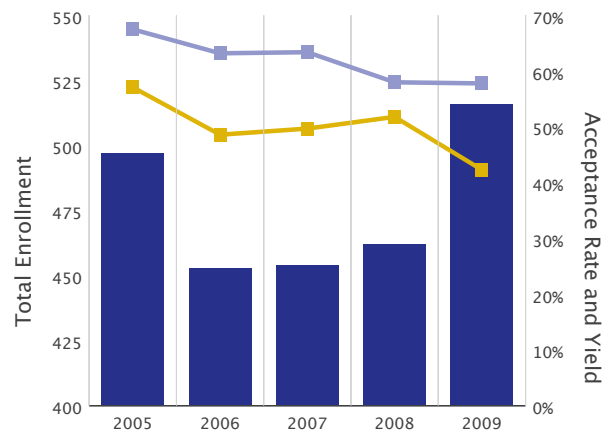
Public Health

Doctoral							
Year	# of Applicants	Denied	Accepted	New Enrollees	Total Enrollment	Acceptance Rate	Yield Rate
2005	251	152	99	43	246	39.4%	43.4%
2006	283	168	115	50	249	40.6%	43.5%
2007	322	232	90	42	241	28.0%	46.7%
2008	322	229	93	44	230	28.9%	47.3%
2009	376	275	101	52	243	26.9%	51.5%
2008 Snapshot	323	-	-	-	-	-	-
2009 Snapshot	375	-	-	-	-	-	-
2010 Snapshot	418	-	-	-	-	-	-
Master's							
Year	# of Applicants	Denied	Accepted	New Enrollees	Total Enrollment	Acceptance Rate	Yield Rate
2005	657	282	375	253	497	57.1%	67.5%
2006	733	377	356	225	453	48.6%	63.2%
2007	743	374	369	234	454	49.7%	63.4%
2008	823	397	426	247	462	51.8%	58.0%
2009	1080	623	457	264	516	42.3%	57.8%
2008 Snapshot	847	-	-	-	-	-	-
2009 Snapshot	1112	-	-	-	-	-	-
2010 Snapshot	1192	-	-	-	-	-	-

Doctoral



Master's



■ Total Enrollment

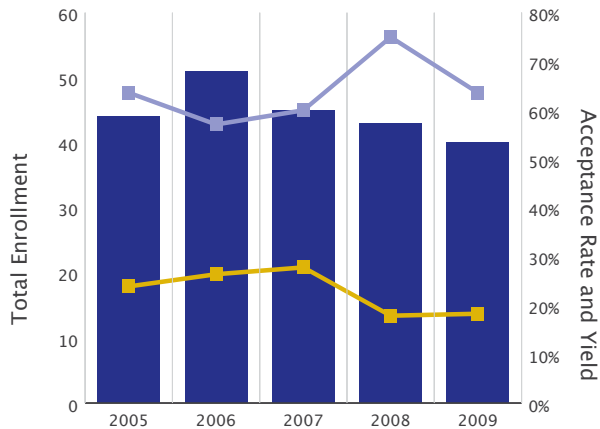
■ Acceptance Rate

■ Yield Rate

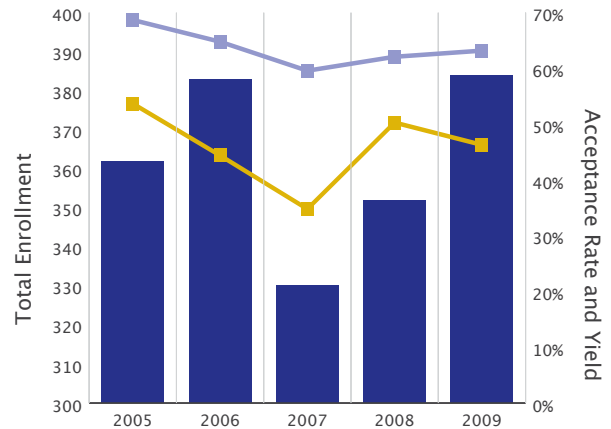
Social Work

Doctoral							
Year	# of Applicants	Denied	Accepted	New Enrollees	Total Enrollment	Acceptance Rate	Yield Rate
2005	46	35	11	7	44	23.9%	63.6%
2006	53	39	14	8	51	26.4%	57.1%
2007	36	26	10	6	45	27.8%	60.0%
2008	67	55	12	9	43	17.9%	75.0%
2009	60	49	11	7	40	18.3%	63.6%
2008 Snapshot	66	-	-	-	-	-	-
2009 Snapshot	59	-	-	-	-	-	-
2010 Snapshot	59	-	-	-	-	-	-
Master's							
Year	# of Applicants	Denied	Accepted	New Enrollees	Total Enrollment	Acceptance Rate	Yield Rate
2005	499	231	268	184	362	53.7%	68.7%
2006	639	355	284	184	383	44.4%	64.8%
2007	689	449	240	143	330	34.8%	59.6%
2008	634	315	319	198	352	50.3%	62.1%
2009	687	369	318	201	384	46.3%	63.2%
2008 Snapshot	804	-	-	-	-	-	-
2009 Snapshot	694	-	-	-	-	-	-
2010 Snapshot	850	-	-	-	-	-	-

Doctoral



Master's



■ Total Enrollment

■ Acceptance Rate

■ Yield Rate

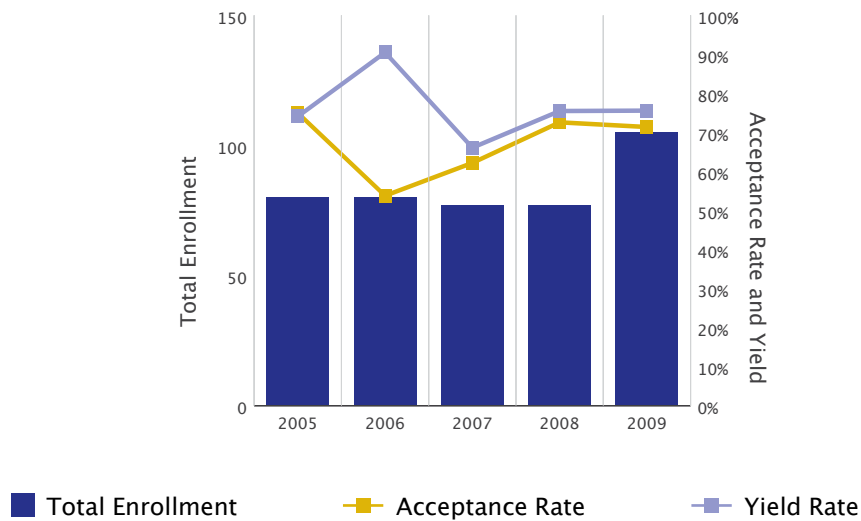
UW–Seattle Professional Degree Programs Applications

Master's						
	2005	2006	2007	2008	2009	2009
Dentistry–DDS	-	922	1170	1151	1058	1027
Law–JD	2469	2545	2585	2415	2448	-
Medicine–MD	3224	3755	4598	4629	4266	-
Pharmacy–PharmD	424	474	525	493	396	-

UW Bothell – Business

Master's							
Year	# of Applicants	Denied	Accepted	New Enrollees	Total Enrollment	Acceptance Rate	Yield Rate
2005	72	18	54	40	80	75.0%	74.1%
2006	78	36	42	38	80	53.8%	90.5%
2007	90	34	56	37	77	62.2%	66.1%
2008	73	20	53	40	77	72.6%	75.5%
2009	126	36	90	68	105	71.4%	75.6%
2008 Snapshot	77	-	-	-	-	-	-
2009 Snapshot	116	-	-	-	-	-	-
2010 Snapshot	104	-	-	-	-	-	-

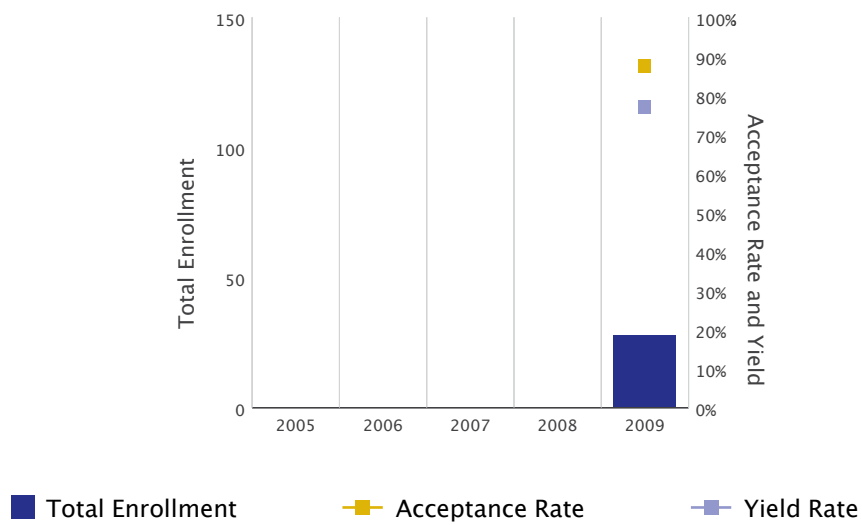
Master's



UW Bothell – Computer & Software Systems

Master's							
Year	# of Applicants	Denied	Accepted	New Enrollees	Total Enrollment	Acceptance Rate	Yield Rate
2009	40	5	35	27	28	87.5%	77.1%
2009 Snapshot	0	-	-	-	-	-	-
2010 Snapshot	18	-	-	-	-	-	-

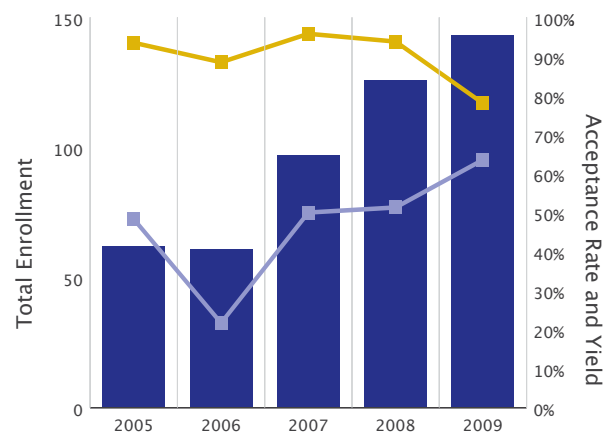
Master's



UW Bothell – Education

Master's							
Year	# of Applicants	Denied	Accepted	New Enrollees	Total Enrollment	Acceptance Rate	Yield Rate
2005	31	2	29	14	62	93.5%	48.3%
2006	52	6	46	10	61	88.5%	21.7%
2007	71	3	68	34	97	95.8%	50.0%
2008	81	5	76	39	126	93.8%	51.3%
2009	109	24	85	54	143	78.0%	63.5%
2008 Snapshot	43	-	-	-	-	-	-
2009 Snapshot	67	-	-	-	-	-	-
2010 Snapshot	60	-	-	-	-	-	-

Master's

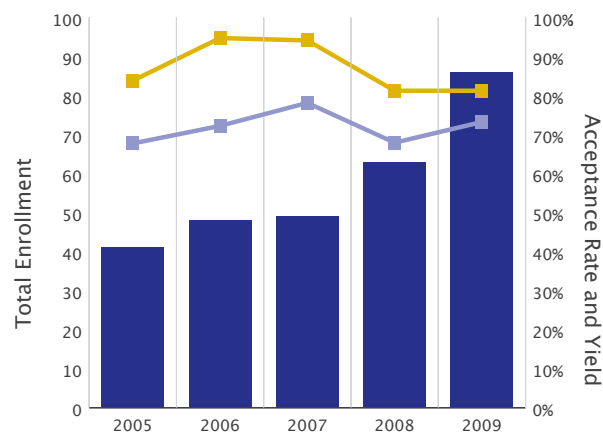


Total Enrollment
 Acceptance Rate
 Yield Rate

UW Bothell – Interdisciplinary Arts and Sciences

Master's							
Year	# of Applicants	Denied	Accepted	New Enrollees	Total Enrollment	Acceptance Rate	Yield Rate
2005	37	6	31	21	41	83.8%	67.7%
2006	38	2	36	26	48	94.7%	72.2%
2007	34	2	32	25	49	94.1%	78.1%
2008	69	13	56	38	63	81.2%	67.9%
2009	69	13	56	41	86	81.2%	73.2%
2008 Snapshot	71	-	-	-	-	-	-
2009 Snapshot	70	-	-	-	-	-	-
2010 Snapshot	72	-	-	-	-	-	-

Master's

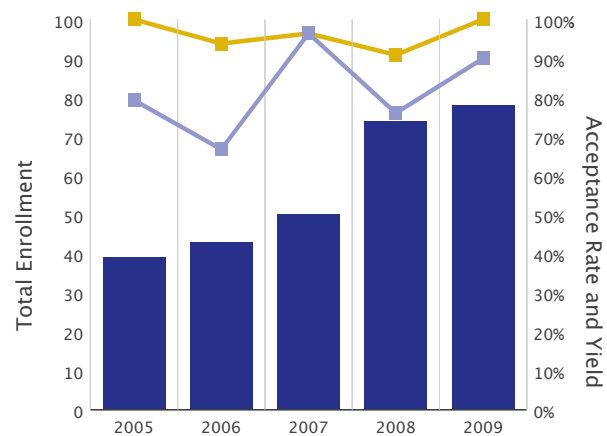


Total Enrollment
 Acceptance Rate
 Yield Rate

UW Bothell – Nursing

Master's							
Year	# of Applicants	Denied	Accepted	New Enrollees	Total Enrollment	Acceptance Rate	Yield Rate
2005	29	0	29	23	39	100.0%	79.3%
2006	32	2	30	20	43	93.8%	66.7%
2007	28	1	27	27	50	96.4%	100.0%
2008	55	5	50	38	74	90.9%	76.0%
2009	30	0	30	27	78	100.0%	90.0%
2008 Snapshot	52	-	-	-	-	-	-
2009 Snapshot	39	-	-	-	-	-	-
2010 Snapshot	59	-	-	-	-	-	-

Master's

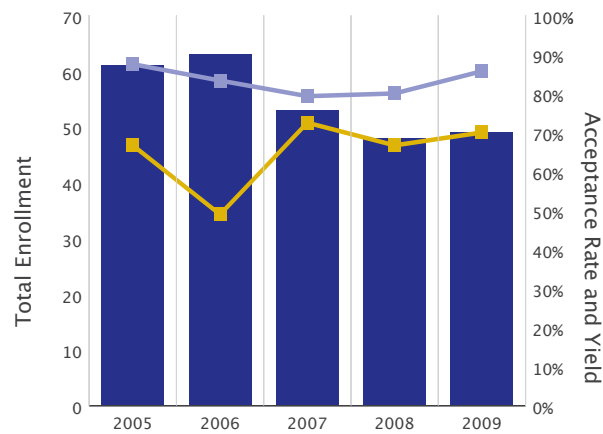


Total Enrollment
 Acceptance Rate
 Yield Rate

UW Tacoma – Business

Master's							
Year	# of Applicants	Denied	Accepted	New Enrollees	Total Enrollment	Acceptance Rate	Yield Rate
2005	48	16	32	28	61	66.7%	87.5%
2006	49	25	24	20	63	49.0%	83.3%
2007	40	11	29	23	53	72.5%	79.3%
2008	45	15	30	24	48	66.7%	80.0%
2009	30	9	21	18	49	70.0%	85.7%
2008 Snapshot	46	-	-	-	-	-	-
2009 Snapshot	31	-	-	-	-	-	-
2010 Snapshot	41	-	-	-	-	-	-

Master's



■ Total Enrollment

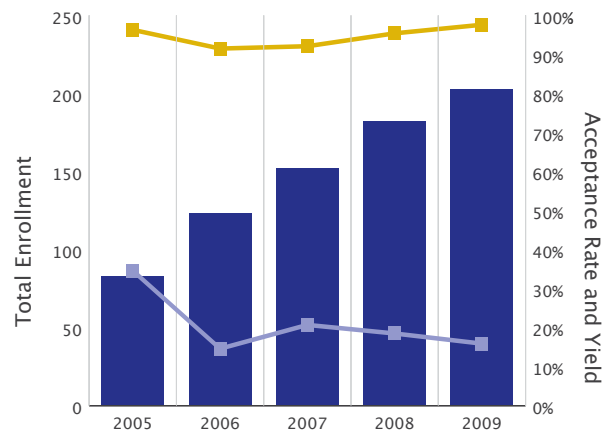
—■— Acceptance Rate

—■— Yield Rate

UW Tacoma – Education

Master's							
Year	# of Applicants	Denied	Accepted	New Enrollees	Total Enrollment	Acceptance Rate	Yield Rate
2005	54	2	52	18	83	96.3%	34.6%
2006	142	12	130	19	123	91.5%	14.6%
2007	152	12	140	29	152	92.1%	20.7%
2008	153	7	146	27	182	95.4%	18.5%
2009	168	4	164	26	203	97.6%	15.9%
2008 Snapshot	123	-	-	-	-	-	-
2009 Snapshot	126	-	-	-	-	-	-
2010 Snapshot	162	-	-	-	-	-	-

Master's

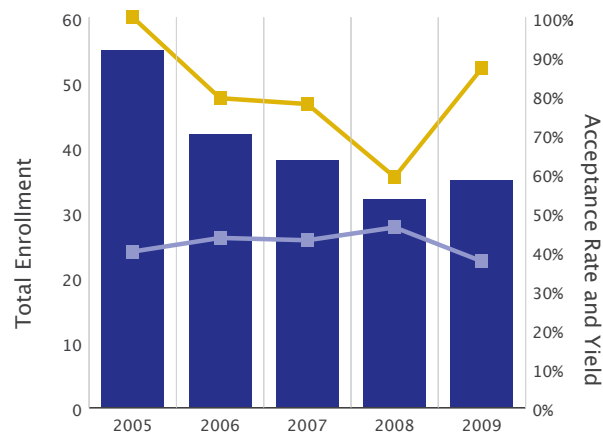


Total Enrollment
 Acceptance Rate
 Yield Rate

UW Tacoma – Institute of Technology

Master's							
Year	# of Applicants	Denied	Accepted	New Enrollees	Total Enrollment	Acceptance Rate	Yield Rate
2005	25	0	25	10	55	100.0%	40.0%
2006	29	6	23	10	42	79.3%	43.5%
2007	18	4	14	6	38	77.8%	42.9%
2008	22	9	13	6	32	59.1%	46.2%
2009	46	6	40	15	35	87.0%	37.5%
2008 Snapshot	14	-	-	-	-	-	-
2009 Snapshot	27	-	-	-	-	-	-
2010 Snapshot	29	-	-	-	-	-	-

Master's

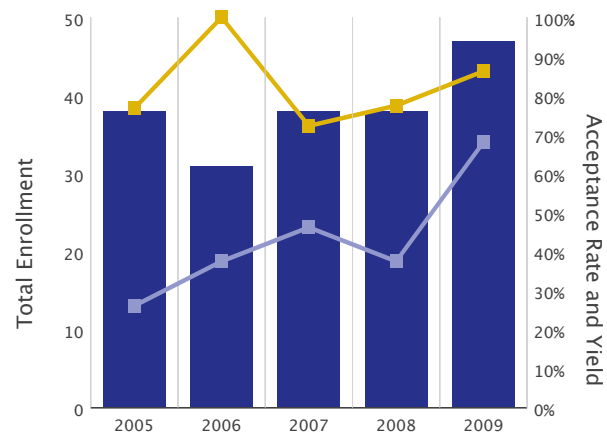


Total Enrollment
 Acceptance Rate
 Yield Rate

UW Tacoma – Interdisciplinary Arts and Sciences

Master's							
Year	# of Applicants	Denied	Accepted	New Enrollees	Total Enrollment	Acceptance Rate	Yield Rate
2005	30	7	23	6	38	76.7%	26.1%
2006	16	0	16	6	31	100.0%	37.5%
2007	36	10	26	12	38	72.2%	46.2%
2008	31	7	24	9	38	77.4%	37.5%
2009	29	4	25	17	47	86.2%	68.0%
2008 Snapshot	19	-	-	-	-	-	-
2009 Snapshot	19	-	-	-	-	-	-
2010 Snapshot	21	-	-	-	-	-	-

Master's

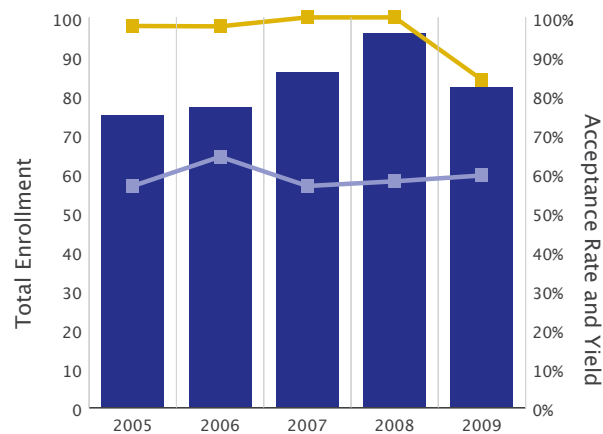


Total Enrollment
 Acceptance Rate
 Yield Rate

UW Tacoma - Nursing

Master's							
Year	# of Applicants	Denied	Accepted	New Enrollees	Total Enrollment	Acceptance Rate	Yield Rate
2005	45	1	44	25	75	97.8%	56.8%
2006	43	1	42	27	77	97.7%	64.3%
2007	44	0	44	25	86	100.0%	56.8%
2008	50	0	50	29	96	100.0%	58.0%
2009	50	8	42	25	82	84.0%	59.5%
2008 Snapshot	20	-	-	-	-	-	-
2009 Snapshot	28	-	-	-	-	-	-
2010 Snapshot	28	-	-	-	-	-	-

Master's

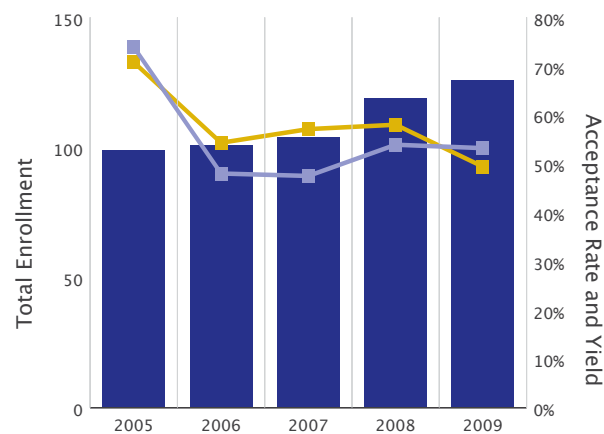


Total Enrollment
 Acceptance Rate
 Yield Rate

UW Tacoma – Social Work

Master's							
Year	# of Applicants	Denied	Accepted	New Enrollees	Total Enrollment	Acceptance Rate	Yield Rate
2005	65	19	46	34	99	70.8%	73.9%
2006	138	63	75	36	101	54.3%	48.0%
2007	140	60	80	38	104	57.1%	47.5%
2008	131	55	76	41	119	58.0%	53.9%
2009	156	79	77	41	126	49.4%	53.2%
2008 Snapshot	135	-	-	-	-	-	-
2009 Snapshot	152	-	-	-	-	-	-
2010 Snapshot	198	-	-	-	-	-	-

Master's



Total Enrollment
 Acceptance Rate
 Yield Rate